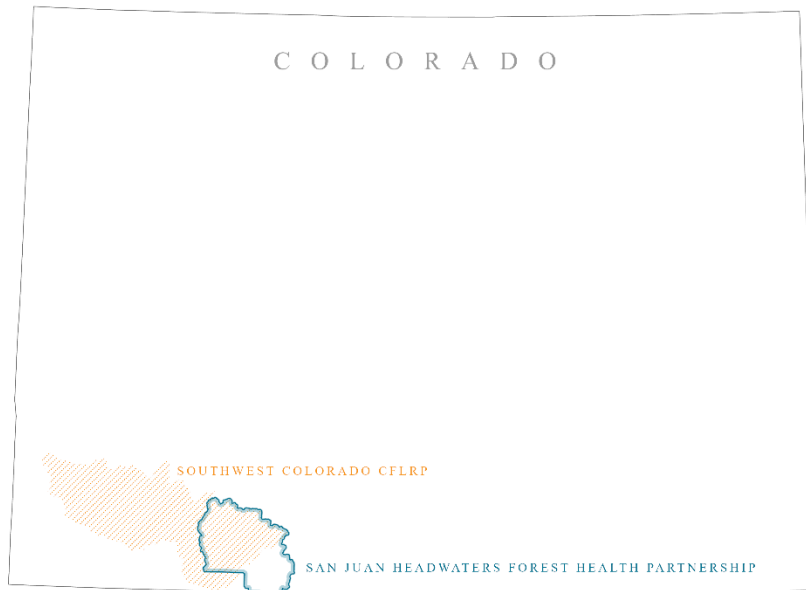




DRAFT

SJHFHP Priority Landscape Fact Sheets



Disclaimer: This is a living document. It only includes priority areas within the Southwest Colorado CFLRP landscape. SJHFHP has other priorities that fall within the Rio Chama CFLRP landscape that are not currently listed on this document but will be included after future conversations. These priorities are listed in no specific order. For more information about completed and ongoing projects, visit our website to see the [INTERACTIVE MAP](#) that we maintain and update annually.

Jackson Mountain.....2

Plumtaw/Fourmile.....5

Aspen Springs.....8

West Fork/East Fork.....11

Turkey Springs.....14

Other priorities.....17

JACKSON MOUNTAIN

Size: 8,000 acres

Ownership:

Land manager	Percent cover
San Juan National Forest	82
Private	17
BLM	1

Vegetation type:

Vegetation type (LANDFIRE)	Percent cover
Southern Rocky Mountain Ponderosa Pine Woodland	32
Southern Rocky Mountain Dry-Mesic Montane Mixed Conifer Forest and Woodland	24
Western Cool Temperate Pasture and Hayland	11
Rocky Mountain Aspen Forest and Woodland	9
Rocky Mountain Gambel Oak-Mixed Montane Shrubland	7

Collaborative values:

- Research and monitoring
 - Adaptive Silviculture for Climate Change (ASCC)
 - Pre-treatment monitoring completed in 2023
 - Snowtography
- WUI
 - San Juan River Village

Ecological values:

- Wildlife
 - Elk migration corridor and severe winter range
 - Mule deer migration corridor

Socioeconomic values :

- Recreation
 - Mountain biking
 - Hiking
 - Hunting
 - River access
- Livestock grazing

Headwaters developed a [virtual tour of Jackson Mountain](#) that outlines values across the landscape.

Key partners:

- SJNF
- Rocky Mountain Research Station
- Mountain Studies Institute

- Private landowners

Present and planned management decisions:

- [Jackson Mountain EA](#) (awaiting final approval)
 - Vegetation management:
 - Fuels treatments like mastication
 - Commercial timber
 - Meadow enhancement
- Little Jackson Forest Health and Restoration Project (2007 EA)
 - Prepping the next contract to go out for FY24, ~400 acres of thinning for ASCC
- Laughlin CE (planned for 2026)
 - ~155 acres
 - Likely to be lumped in with future work on the Jackson Mountain EA

Active projects:

- Active operations on ~66 acres as part of the Little Jackson Forest Health and Restoration Project (2007 EA)
- Adaptive Silviculture for Climate Change
 - Pre-treatment monitoring by MSI summer 2023
- Snowtopography site installation and monitoring
 - Installation happening September, 2023
 - Monthly monitoring throughout the winter

PLUMTAW/FOURMILE

Size: 50,000 acres

Ownership:

Land manager	Percent cover
San Juan National Forest	74
Private	26
BLM	<1

Vegetation type:

Vegetation type (LANDFIRE)	Percent cover
Rocky Mountain Aspen Forest and Woodland	25
Southern Rocky Mountain Ponderosa Pine Woodland	18
Southern Rocky Mountain Dry-Mesic Montane Mixed Conifer Forest and Woodland	11
Rocky Mountain Gambel Oak-Mixed Montane Shrubland	10
Inter-Mountain Basins Aspen-Mixed Conifer Forest and Woodland	7

Collaborative values:

- Drinking water
 - The Fourmile diversion and pipeline provides drinking water to the Town of Pagosa Springs
 - Need better defensible space around the headgate
 - Pipeline diversion from west Fork
- Communications and public outreach
 - Plumtaw Fire Film
- WUI
 - Lost Valley of the San Juans
 - Hidden Valley Ranch
- Years of monitoring in this landscape

Ecological values:

- Wildlife

Socioeconomic values:

- Large suitable timber base, “in the wood basket” for maintaining timber industry, an important economic value in the Headwaters landscape.
- Recreation
 - Hunting
- Livestock grazing

Key partners:

- SJNF
- Pagosa Area Water and Sanitation District

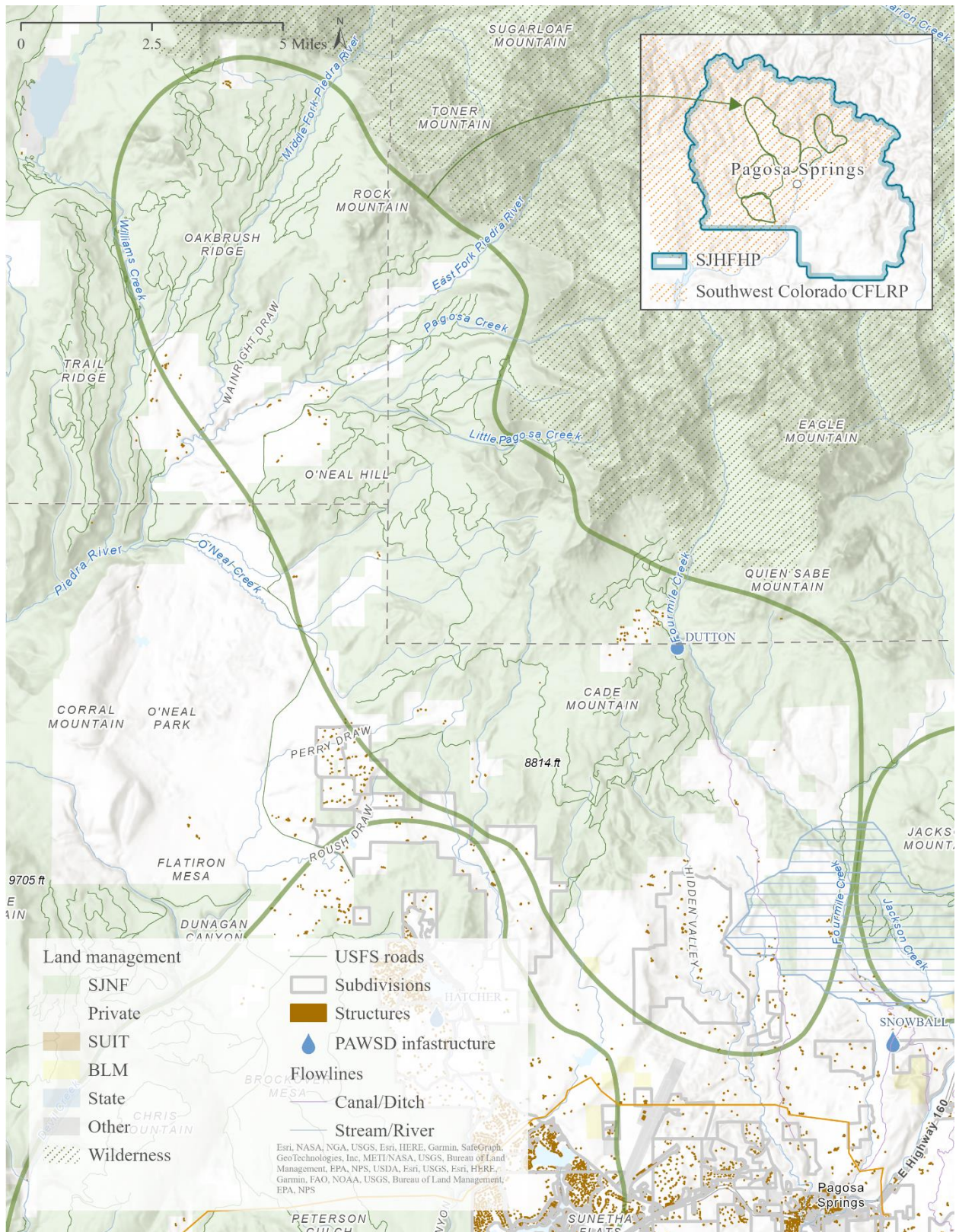
- Private landowners

Present and planned management decisions:

- Planning will be needed in the future. There are no current management decisions.
 - Some areas will need to be retreated (for example, along Fourmile Road where mastication has been completed).
 - Potential future planning around O'Neal Hill

Active projects:

- Private lands projects
 - Hidden Valley
 - Pagosa Peak Ranch
- SJNF just completed work in Pagosa Creek
 - Aspen regeneration
 - Active management



ASPEN SPRINGS

Size: 17,000 acres

Ownership:

Land manager	Percent cover
Private	58
SJNF	24
SUIT	15
BLM	2
State	1

Vegetation type:

Vegetation type (LANDFIRE)	Percent cover
Southern Rocky Mountain Ponderosa Pine Woodland	52
Rocky Mountain Gambel Oak-Mixed Montane Shrubland	15
Southern Rocky Mountain Dry-Mesic Montane Mixed Conifer Forest and Woodland	10
Colorado Plateau Pinyon-Juniper Woodland	6
Interior Western North American Temperate Ruderal Grassland	4

Collaborative values:

- WUI
- Landscape connectivity
- Opportunity to showcase work because it is highly visible from HWY 160

Socioeconomic values:

- Infrastructure
 - Cell and internet infrastructure on Oakbrush Hill
 - Highway 160 corridor

Key partners:

- Private landowners
- Wildfire Adapted Partnership
- Southern Ute
- SJNF

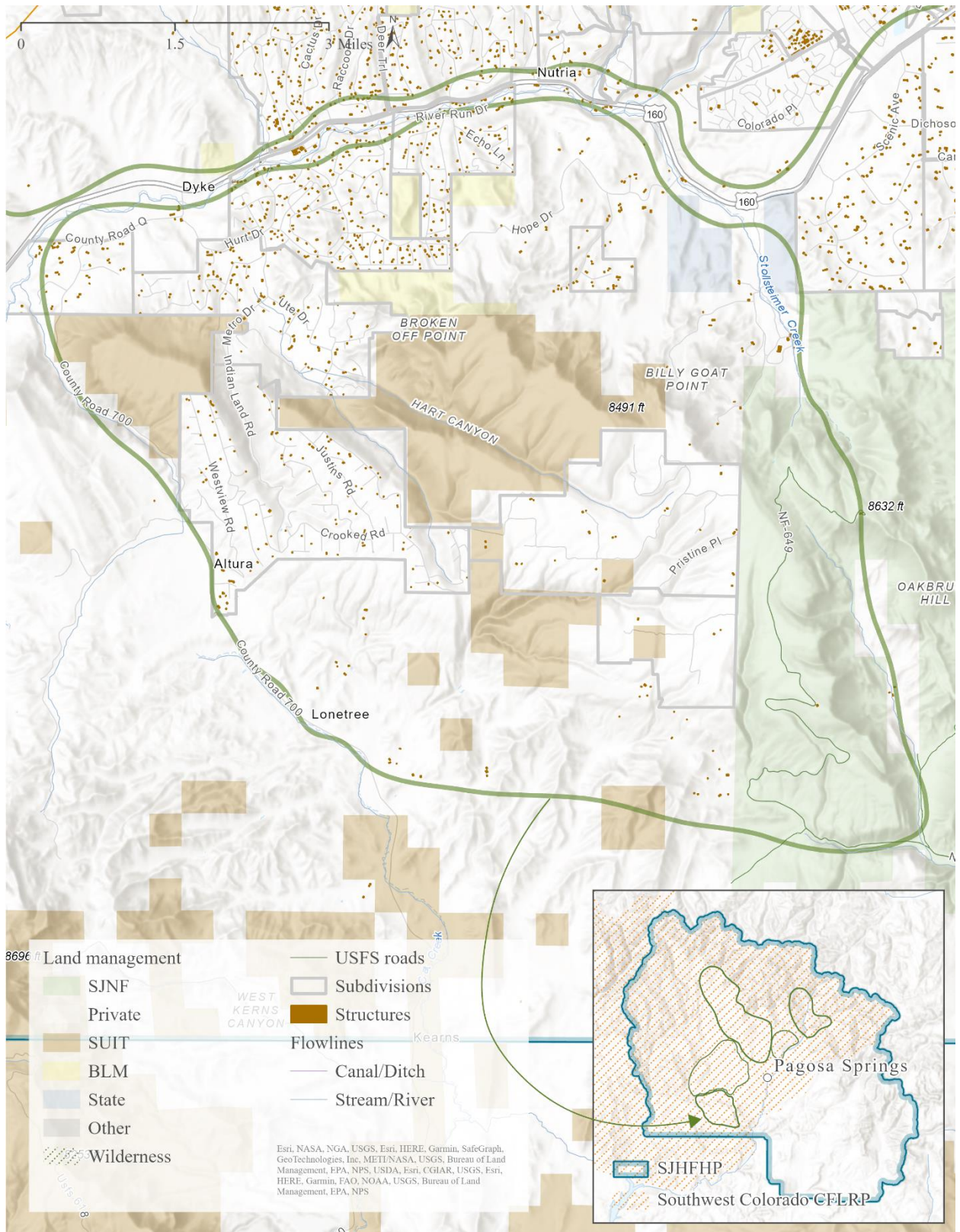
Active projects:

- Wildfire Adapted Partnership is doing community assessments
 - Potential to develop Community Wildfire Protection Plan(s)
- SJNF has done prescribed burning to the west of Aspen Springs in the past

Obstacles to treatment:

- Small parcels
- Low-income

- Sometimes landowners aren't willing to do treatment on their land and there is concern that removing trees would remove the buffer from the road (privacy screens) and reduce property value
- Access
 - Emergency access and egress during a fire event
 - Southern Ute parcels that are "land-locked" by private land, need access through private property to access
- Need to establish better coordination and communication with Southern Ute
- Virtually no infrastructure for residents



WEST FORK/EAST FORK

Size: 18,000 acres

Ownership:

Land manager	Percent cover
San Juan National Forest	77
Private	23
State	<1

Vegetation type:

Vegetation type (LANDFIRE)	Percent cover
Southern Rocky Mountain Mesic Montane Mixed Conifer Forest and Woodland	22
Rocky Mountain Aspen Forest and Woodland	19
Southern Rocky Mountain Dry-Mesic Montane Mixed Conifer Forest and Woodland	17
Rocky Mountain Subalpine Dry-Mesic Spruce-Fir Forest and Woodland	12
Southern Rocky Mountain Ponderosa Pine Woodland	10

Collaborative values:

- Cross-boundary opportunities between SJNF and private landowners
 - Large private properties
- Public engagement opportunity, highly visible

Ecological values:

- Forest health
- Watershed health
- San Juan Cutthroat population and habitat

Socioeconomic values:

- Infrastructure
 - West Fork diversion
 - Water quality concerns of post-fire impacts
 - HWY 160 corridor
- Recreation
 - Campgrounds
 - OHV

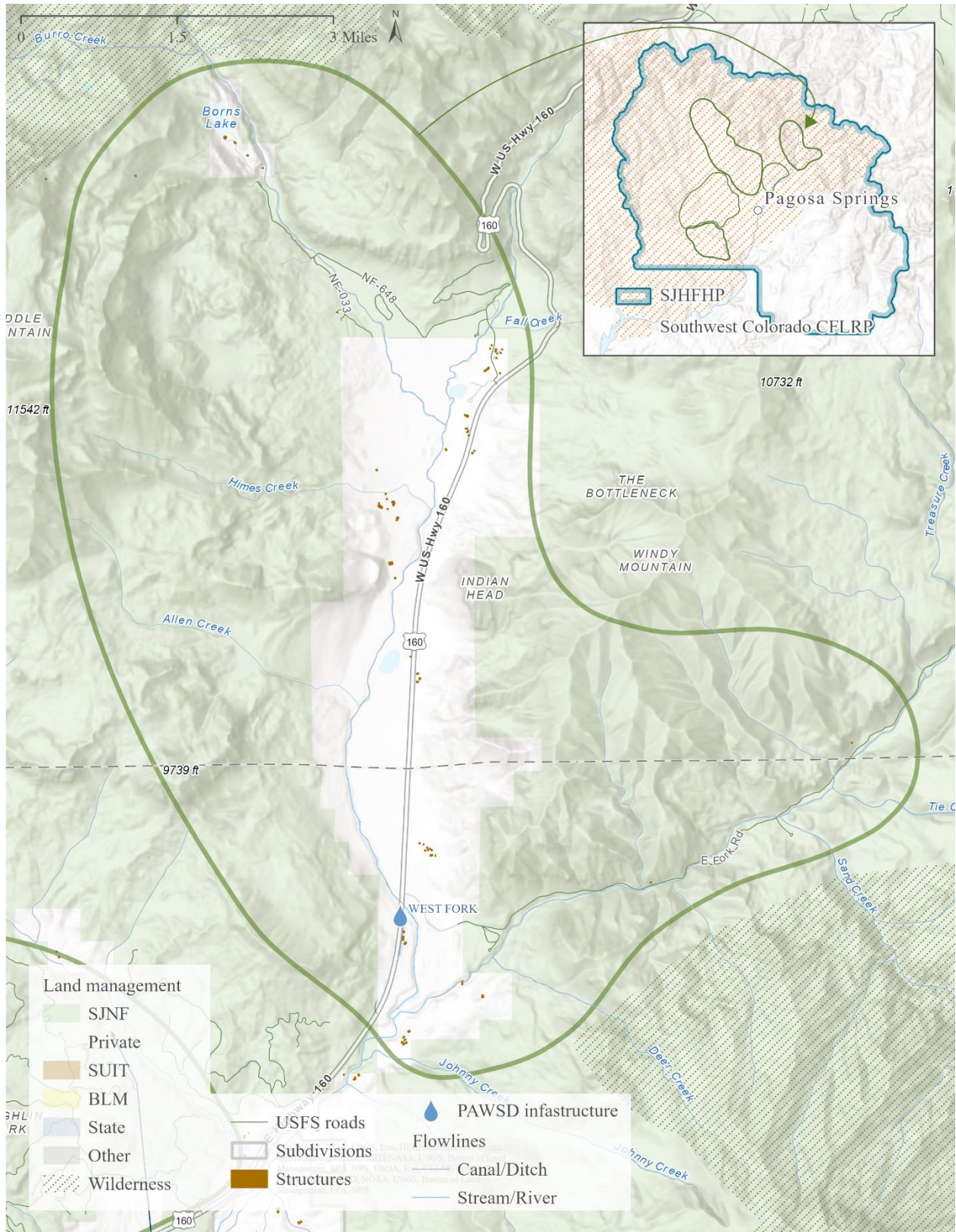
Key partners:

- SJNF
- Private landowners

Present and planned management decisions:

- Fuels and Forest Health CE (2011)

- New CE to include cross-boundary opportunity with Bruce Spruce Ranch and previous forest health prescriptions
- Future recreation planning is needed



TURKEY SPRINGS

“a forever priority”

Size: 35,000 acres

Ownership:

Land manager	Percent cover
San Juan National Forest	52
Private	47
BLM	1
Local govt.	<1

Vegetation type:

Vegetation type (LANDFIRE)	Percent cover
Southern Rocky Mountain Ponderosa Pine Woodland	59
Southern Rocky Mountain Dry-Mesic Montane Mixed Conifer Forest and Woodland	7
Rocky Mountain Gambel Oak-Mixed Montane Shrubland	7
Developed-Roads	4
Colorado Plateau-Pinyon-Juniper Woodland	3

Collaborative values:

- Cross-boundary opportunities between SJNF and private landowners
- WUI
 - PLPOA
- Years of monitoring in this landscape

Socioeconomic values:

- Population hub
- Recreation
 - Hiking
 - Mountain biking
 - OHV
- Infrastructure
 - Tri-state powerline
 - Water infrastructure

Key partners:

- SJNF
- Wildfire Adapted Partnership
- Tri-State
- Private landowners, HOAs

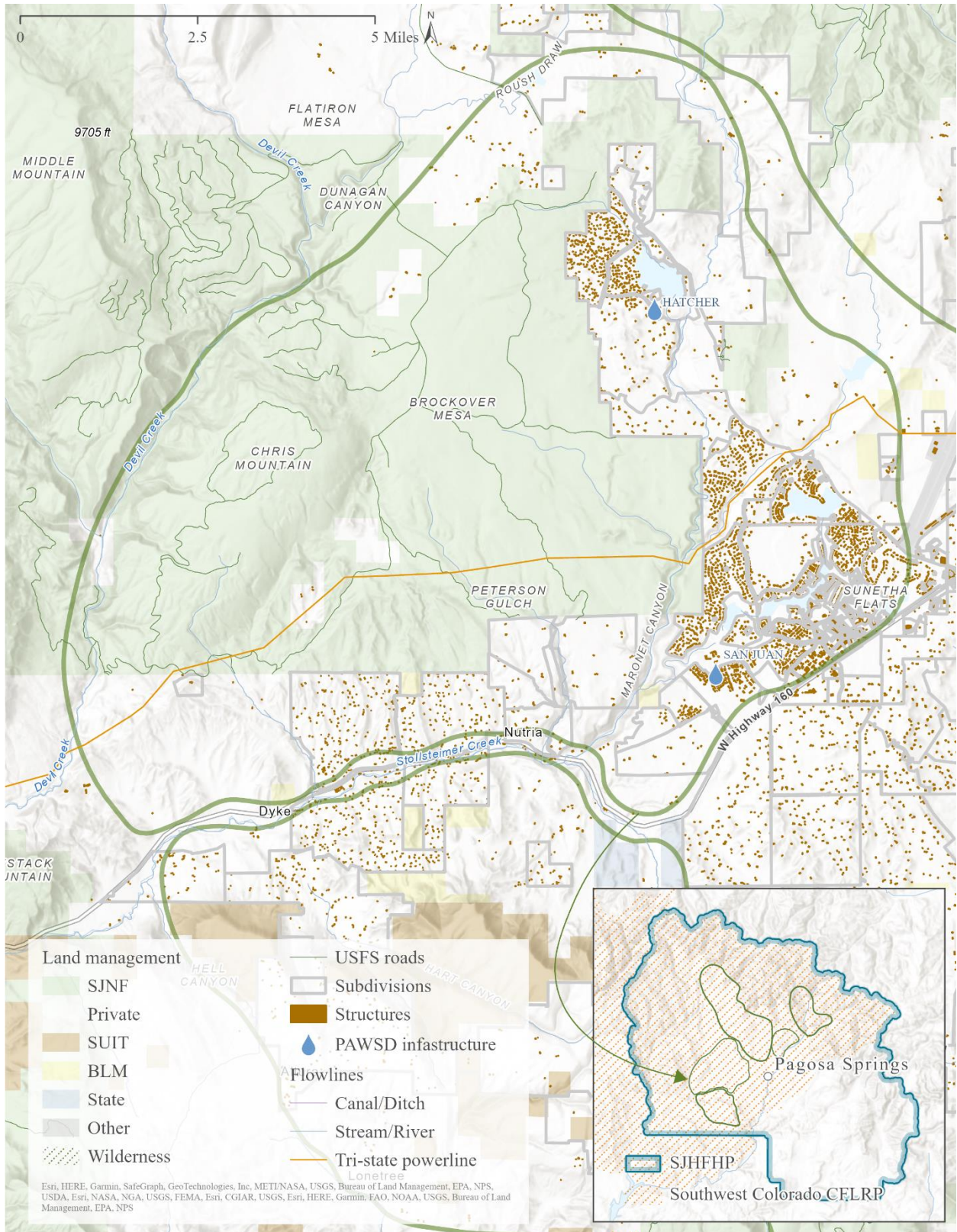
Present and planned management decisions:

- Turkey Springs Vegetation Management Project (2021)

- Earlier Turkey Springs EA

Active projects:

- SJNF
 - Active mastication work in Turkey Springs
 - Just awarded a contract for 184 acres of work
- Wildfire Adapted Partnership
 - Home assessments
 - Mitigation in HOA common space



OTHER PRIORITIES

Trail maintenance, including clearing downed trees

- Firefighter access and safety
- Socioeconomic benefits of recreation

“Hardening” POD boundaries

- Increase collaborative awareness about PODs
- Promote the successful management of wildfire
- This will be a discussion item for winter meetings

San Juan Cutthroat

- Population
- Habitat