



San Juan Headwaters FOREST HEALTH PARTNERSHIP

San Juan Headwaters Forest Health Partnership Virtual Meeting NOTES for Friday, February 18, 2022

Location: Virtual Zoom Meeting

Regular Meeting: 9:00 AM – 11:00 AM

In Attendance: Dana Guinn (MSI), Aaron Kimple (MSI), Josh Peck (SJNF), Tim Leishman (SJNF), Emily Hohman (TNC), Estevan Vega (CSFS), Mark Loveall (CSFS), Mercedes Siegle-Gaither (CSFS), Bill Trimarco (WAP), Caleb Stotts (CPLA), Cody Robertson (NRCS), Kyle O’Neill (NRCS), Helen Katich (Senator Hickenlooper), Tim Haarmann (Banded Peak Ranch), Matt Ford (Clean Forest Energy), Matt Tuten (USFS R2 State and Private Forestry), Mike Remke (FLC), Robin Young (CSU Extension)

VIRTUAL MEETING NOTES

Updates

- Scheduled Partner Updates
 - Senator Hickenlooper
 - DOI funds coming from infrastructure package
 - If partners have questions about grants or competitive funding opportunities coming from the infrastructure package reach out
 - Distribute guide put together by office, and also Whitehouse guide (eligibility requirements and more)
 - Hickenlooper and Romney introduced Upper Colorado and San Juan River Basins Recovery Act
 - Authorizes BOR to continue implementing cooperative agreements for these basins through 2024
 - Extends DOI deadline by 1 year into 2022. Additional funds and sustained funds for Upper Colorado and San Juan recovery programs associated with endangered fish
 - Press release to be distributed
 - Matt Tuten position change to State and Private Forestry R2
 - 6 years on PRD as silviculturist and timber manager
 - State and Private Forestry and Tribal Relations
 - Per 70’s Cooperative Forestry Act this branch of the FS facilitates private and state forest land management
 - Position Specifics
 - Sustainable management of state and private lands (no longer part of National Forest System management)
 - Manage forest stewardship program
 - Helps long term private land forest management plan development
 - Administer plan through CSFS, funds state efforts to manage private land including forest ag program (real

- estate tax breaks for property owners managing land for agricultural forestry outputs)
 - Coordinate regional agreement with CFRI
 - Figure out where SWERIs can be of assistance throughout the region and particularly in CO
 - Still plans to be part of Headwaters with a different focus
 - CSU Extension
 - Technical working group for CPW reintroduction of the wolf
 - Will impact forests and grazing leases
 - 1 year into a 3-year process, shooting for final draft by August 2022 internally, followed by a public release and review session likely in Jan 2023
 - Relisting of wolf as endangered species may impact timelines and processes
 - EA or EIS processes could delay release of wolves on landscape by goal time of Dec 2023
 - If have comments about this process, forward them to Robin to discuss in planning
 - A process where everyone needs to have input
 - NEPA only works if people participate!
 - Seed saving class in March
- WAP
 - PLPOA
 - Reimbursement programs in Pagosa Lakes, 40% back on what spend on mitigation
 - Getting closer to controlling green belts in poor condition from a forest health and fuels standpoint
 - FRWRM grant to work in hwy 84 corridor
 - Ties in to work that SJNF and other groups having going in this area
 - Community assessments
 - Many communities lining up to get full assessments
 - Tie these in with NFPA Firewise USA program
 - A condensed version of a CWPP at the community level
 - Work continues, need to renew annually
 - WAP working on an MOU with San Juan Conservation District to ensure working together where interests overlap
 - WAP is working together with Coalitions and Collaboratives on community wildfire mitigation best practices
 - Bill an instructor
 - First series of classes filled up, adding a second round
 - Mitigation oriented program focusing on private lands that focuses on defensible space
 - Focuses on fire protection over response
 - Lots of USFS and FEMA folks involved on the mitigation end
 - Important work that has come about through the collaboratives
- Pagosa Forest Products
 - Many iterations of business models for wood chip plant
 - Current model negatively impacted by escalation of prices and inflation
 - Applied for community wood innovations grant to offset costs for equipment
- Wood for Life (USFS)

- Dolores Ranger District pilot project in partnership with NFF
 - Cut, skid, deck projects or stewardship projects where transfer of forest products aren't a component of the contract
 - POL and small diameter
 - Developing a SPA with NFF specifically for WFL
 - Seed money to get programs
 - Private donors through NFF are waiting to support growing projects
 - E.g. Weston Backcountry split boards from Denver supported pilot project in Dolores
 - Goal is to have agreement in place by April 15 (tied to acquisition deadline for R2)
 - Designing in Columbine with the hope of rolling it over to the Pagosa program
 - WUI fuels projects related to RMRI in Durango area means Columbine district has some specific needs
 - A tool used more readily in Columbine area in coming years, but can also be applied in Pagosa
- WFL gained momentum on Coconino and Kaibab national forests in northern AZ
 - SJNF working to build a similar program
 - Opportunities to explore with Navajo Nation, Southern Ute, Ute Mountain Ute, Jicarilla Apache
 - Work together with Santa Fe and Carson to scale the program in the 232 landscape
- Working with Chinle chapter house, tribal government, and Indian Agency representatives
 - Planned to identify community needs
- Connect Tim Leishman with northern NM Fuelwood working group, Women Owning Woodlands Group in Chama
- CSFS
 - As grant programs roll out, to keep group informed
 - FRWRM
 - Seedling nursery is being retooled
 - Quantities are limited, mostly perennial flowers available, not many seedling trees
 - Hiring a new manager and getting things set up for 2023
 - La Plata Conservation District won't be handing in Archuleta County orders this year due to low availability, call CSFS office in Durango if needed
- NRCS
 - EQUIP assessments and rankings are underway
 - [PL 566 Watershed program](#)
 - Keep an eye out for opportunities
 - Some requests coming forward
 - May be impacted by infrastructure bill funding
 - Support for local organizations and governments planning and implementing watershed projects
 - Locally led to solve natural and human resource problems in watersheds up to 250,000ac (less than 400 square miles)
- MSI

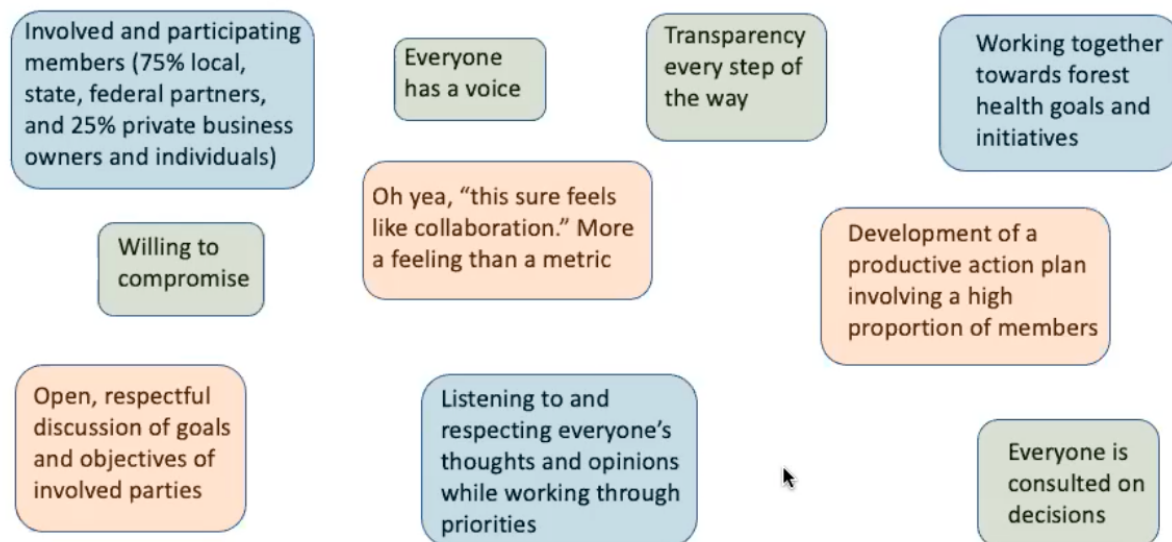
- Julia Ledford joining the MSI team as the Forst Programs Assistant, starting first week of March
- Still seeking Monitoring Coordinator
- SJNF
 - Detailer selected for Matt Tuten's position from Wrangall, AK
 - On board beginning of April
 - Interest in permanent job
 - Focus of PRD for 6-8 months
 - Jackson Mountain proposal
 - Potential Rx fire spring burning: Turkey Springs, other locations
 - More info at April Headwaters meeting
 - SJHFHP to support public ed about Rx fire and ecology
- Banded Peak Ranch
 - Working to get a carbon credit project off the ground
 - Private land held in conversation easement with a carbon project is a challenge (Colorado Open Lands and Forest Legacy)
 - If others have an interest in discussing this process reach out to Tim Haarmann
- CFLR other Landscape Scale Initiatives Status
 - SW CO CFLR Governance Planning
 - Working in subgroups to develop a working list of expectations from collaborative e groups and stakeholders of the forest service
 - Matching this up with FS expectations of collaboratives and stakeholders
 - Governance structure that enables managers of CFLR projects and programs to fulfill needs of legislation and proposal
 - March 2 long meeting in Durango
 - Regular check ins with stakeholders and collaboratives matters, reach out if you have input or expertise to share
 - Rio Chama CFLR funding and monitoring planning
 - Rio Chama CFLR to see funding under a CR, possibly as early as March
 - Technically not supposed to fund new projects under CRs
 - Senator Hicknlooper and Bennet looking at this
 - Lots of investment and preparation, funding needed to support the work
 - CFLR pipeline starting to flow with more to come in a budget reconciliation bill
 - Rio Chama CFLR
 - Working on agreements with SFNF and R3 along with Forest Steward's Guild
 - Opportunity for all of partners to engage
 - Thinking through bridging state forestry and ensuring CO and NM work together (Shared Stewardship Portal) and report out about planning and progress
 - Cross-Boundary Opportunities and Planning in 3-5 year time horizon
 - Mapping and planning meeting slated for April 2022, May review
 - Land managers be on the look out for a request for shapefiles that show completed work, outyear planning and 2-5 year planning items
 - Important for leveraging landscape scale initiatives
 - Planning for an in person meeting

- Infrastructure Bill Funds
 - Funding coming through the state: DNR, CWCB and other state programs have money starting to move into the system
 - FRWRM
 - CoSWAP – new program through DNR, targets specific counties and RMRI landscape
 - Funds need to move quickly towards shovel ready projects
 - Identify 3-5 year timeline planning needs and shovel ready projects as identified areas may not be able to absorb all funding
 - Will move through existing programs first, new programs likely to develop later
 - Additional money within USFS
 - Brian Ferebee (Chief Executive of Intergovernmental Relations for USFS) going region to region and inviting regional players to discussions through March to consider distribution of funding
 - Currently focused on CO Front Range, then moving to Black Hills, next will be SW CO
 - SWCO is towards the top of landscapes being looked at in R2
 - Focus on collaboratives as being key to moving and utilizing this funding
 - Interest in understanding and describing collaborative effectiveness
 - All of collaboratives being pushed to tell their story, acknowledge work doing and staging selves as a good place to get work done
 - Growing fire as a tool is another important piece of this
 - SW Conservation Corps
 - TREX planning
- Headwaters Finances
 - Ended 2021 with \$24,400 cash
 - Thank you to donors: San Juan Water Conservancy District, PAWSD, Banded Peak Ranch, Town of Pagosa Springs, Alpine Cascade, Mike Remke calendar sales
 - Quarterly Finance reports
 - 2021 final numbers are in, finance committee meeting to be schedule
- 2020 Partner of the Year Award
 - Dana awarded with CSFS 2020 Partner of the Year Award
 - Nominated by Mercedes Siegle-Gaither

2021 EOY Review

- EOY Survey results (11 respondents)
 - Goals for annual review: hear and listen to others, more communication with public and local organizations, be more involved in 2022, monitor our work, improve effectiveness, identify next steps, secure funding, provide feedback
 - The group advanced its mission: mid 4 range (out of 5)
 - Group meetings and activities moved our initiatives forward: mid 4 range (out of 5), despite major shift in how we do work
 - Project work advances group goals: mid 4 range (out of 5), higher in 2019 compared to 2020 and 2021. Opportunity to improve
 - Top 3 successes: Pagosa Creek, Collaboration, Mixed Conifer, Jackson Mountain, Tours

- Top 2 organizational assets: Partners, Dana, Facilitation
- Ways we didn't meet our goals: more stories in the newspaper and other publications, improvement of small donations, long timelines on decisions and advancing projects, more public communication, community recognition of SJHFHP, local government participation
- Top 2 opportunities: increasing community support, mapping meeting, bridging the forest, huerto creek, improving website and newsletter
- Partners to add or involve more: Archuleta County, Fire District, San Juan Outdoor Club, SUIT, ToPS, private land owners, underserved communities in need of fuel mitigation
- Effective collaboration looks and feels like:



- Goal and priority setting for 2022; Longer range goal and priority setting
 - COVID has been a challenge, consider ways to be more active in community in 2022
 - Work to increase small donations
 - Let people in our community know what we do and why it matters (newsletter distribution and consistency, articles for newspaper, other opportunities, visit with people in the community)
 - Most of WAP outreach has been through site visits, and it works!
 - Identify what it is that we have to offer
 - Ed outreach component has been a challenge for some time
 - WAP will be co-sponsor of first Com Fest on Friday May 20 (ToPS summer music in the park), promote wildfire community preparedness day (May 7). WAP won't get money, just want to get the message out.
 - Headwaters and others will want to be there too
 - Loggerpalooza at motel SoCo in 2023
 - Identify community events are already occurring where we can spread the word about our work and offer opportunities for engagement
 - Regionally articulating success through relationships with 2-3-2 and landscape scale initiatives

- Partner features: prompt a partner to write a feature about what they do and why it's important the SJHFHP offers an open forum for discussion monthly, bi-monthly?
 - Diversity of voices coming through instead of being filtered through the coordinator only
- Next Steps
- Full EOY report to be available via email and on website in March

Partnership Planning

- Education and Outreach Plan
 - Find creative ways to tell our story
 - Headwaters is the model for coming together as a community
 - Need to move on developing this plan
 - Dana drafts and asks for feedback
 - Work with a small group
- 2022 Tours
 - Huerto Creek
 - Jackson Mountain
 - Price Lakes (in Rio Chama area)
 - Work across boundaries, start this conversation
 - Isolated portion of national forest that borders BPR and wilderness
 - Private lands visit
 - 2 potential projects in Pagosa district, large scale for private lands, depends on whether projects get funded via EQUIP
 - Landowners willing and would likely let group on their property
 - Managing FRWRM project, as part of the approach when taking to landowners can ask if willing to have partnership visit their project
- 2022 and Future Monitoring
 - Pre monitoring done in ASCC sites, once cut will do post tx monitoring
 - Brockover mesa follow up monitoring on Rx fire
 - Consider how to monitor across the landscape and boundaries
 - Monitoring wish list
 - Cloman Park
 - Rez Hill
 - Pagosa creek monitoring (CFRI + Remke and Anthony)
 - Huerto not yet ready for post Tx monitoring, contractor hopes to re-mobilize may or June 2022. Post Tx could be done in fall 2022
 - Weminuche Audubon monitoring partnership
 - Science forum and presentation/interpretation of monitoring so information can be activated
- Strategic Plan Update
- Science Forum: SJHFHP specific, regional
 - Localized science forum in 2021
 - Good share our information with other groups working in the landscape as scaled initiatives move forward
 - Regional forum fully? Hybrid where have specifics and then also share across the forest?
 - Shared analysis could be helpful with RMRI and CFLR
 - More momentum
 - Share research efforts, questions to create protocols and an MPM

- Monitoring program built by MSI as a template or protocol, roll data sets into a story map
 - Share data, information and results
 - Convert to action through AM and monitoring
 - Reach out to CFRI to bridge this, a job for a grad student (to tell the big story including private and federal lands)?
- Mixed Conifer Synthesis follow up
 - Mixed Conifer management workshops supported by CFRI
 - Pagosa and Huerto creek
 - Impacts, why managing this area
 - Mixed Conifer Synthesis as a starting point for conversations for ongoing engagement with management values and opportunities

Other Business

- Please send newsletter content for publication this month
- 2021 Bird Monitoring Report in March, April in person meeting
 - Lifelong learning talk next Thursday at 7pm about bird monitoring via FLC
 - What do the birds tell us about forest treatments? What can the community learn through participation
 - Season planning meeting in April, Headwaters participation requested to support field season goals
- Dana to present at PSHS Career Day Feb 23
- Forest and Fire Learning Series
 - Starting to be planned, more information to come
- Snowtopography development
 - A start to understanding the interaction of forest management and water
 - PAWSD and SJWCD funding earmarked for development of a site
 - Reach out to Dana if you want to help
- Rez Hill with ToPS, Cloman Park with County
 - Working with town manager Andrea Phillips about Rez Hill planning and next steps
 - Cloman a good opportunity for monitoring and public engagement