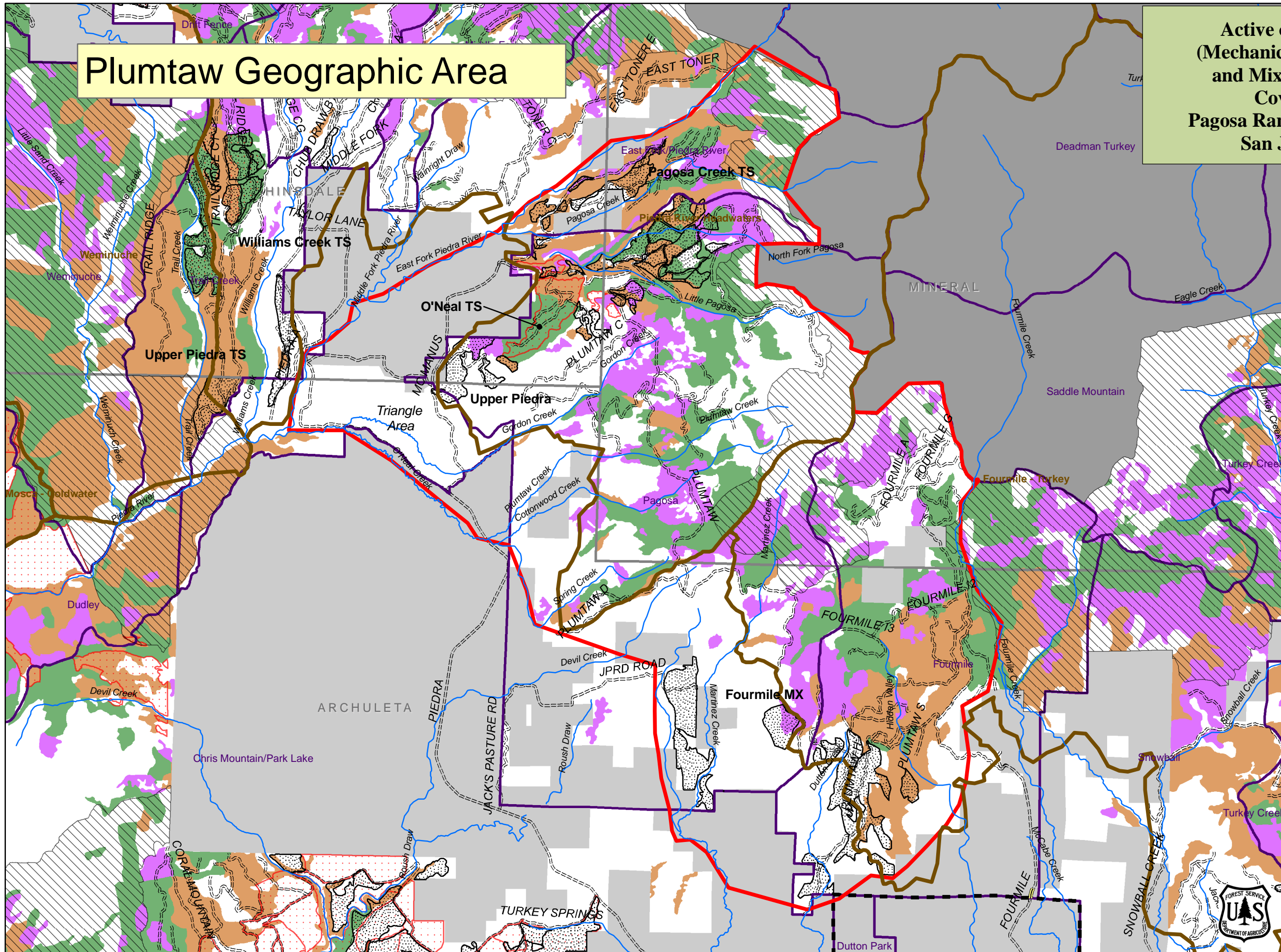


Plumtaw Geographic Area

Active or Planned Activities (Mechanical and Prescribed Fire) and Mixed-conifer Vegetation Cover Types for the Pagosa Ranger District/Field Office San Juan Public Lands



Legend

0 0.3750.75 1.5 Miles

- Plumtaw geographic area
- Grazing allotment
- Lynx Analysis Unit (LAU)
- San Juan National Forest Boundary
- Wilderness
- Nonfederal Lands
- Warm-dry mixed-conifer
- Cool-moist mixed-conifer
- Aspen with Conifer

Active/Planned Activities

- Mechanical Treatment (Thin, Mow, Timber Harvest, etc.)
- Prescribed Fire
- 2009 Roadless Area
- Road other
- Paved road

